

## ➔ ZA6550 X-ray Baggage Scanner (Without IPC)

### Main features

- ⊗ First full-digital security detector , with clear image and strong anti-interference function.
- ⊗ Embedded Linux operating system, more efficient and stable, with multi-core ARM CPU, low power consumption, energy conservation, and environmental protection function .
- ⊗ Each machine is tested by strict high and low temperature test before leaving the factory, can run for more than 10000 hours without failure.
- ⊗ CE/FCC/CCC/ROHS Certificates issued by the Ministry of Public Security.

General Specifications			
Tunnel Size(mm)	650(L)*500(W)	Unit Size (mm)	2195(L)*902(W)*1362(H)
Unit Weight (kgs)	575	Gross Weight (kgs)	700
Conveyor Speed(m/s)	0.22	Conveyor Height(mm)	695
Conveyor Max Load(kgs)	200	X Ray Dose Per Each Inspection	2.0 μGy
X Ray Leakage	<1.0 μGy / h	Penetration	32mm steel
Wire Resolution	dia 0.102mm copper wire (AWG38)	Spatial Resolution	Horizontal: dia1.0mm Vertical: dia1.0mm
Power Consumption	max. 1KW	Noise	< 58 dB
Anode Voltage	140 KV	Anode Power	0.4-1.2mA (adjustable)
Generate Angle	80 degree upward	Generate Direct	from bottom to top
Cooling / Duty Cycle	Oil Cooling /100%		



## ➔ ZA100100 X ray Baggage Scanner (With IPC )

### Main features

- ⊗ First full-digital security detector . Clear image and strong anti-interference function
- ⊗ Embedded Linux operating system, more efficient and stable, with multi-core ARM CPU, low power consumption, energy conservation, and environmental protection function .
- ⊗ Each machine is tested by strict high and low temperature test before leaving the factory, can run for more than 10000 hours without failure
- ⊗ CE/FCC/CCC/ROHS Certificates issued by the Ministry of Public Security.

General Specifications			
Tunnel Size(mm)	1000(L)*1000(W)	Unit Size (mm)	638.5(L)*1295(W)*1916.5(H)
Unit Weight (kgs)	942	Gross Weight (kgs)	1150
Conveyor Speed(m/s)	0.22	Conveyor Height(mm)	338.5
Conveyor Max Load(kgs)	200	X Ray Dose Per Each Inspection	0.8 μGy
X Ray Leakage	<0.2 μGy / h	Penetration	40mm steel
Wire Resolution	dia 0.102mm copper wire (AWG38)	Spatial Resolution	Horizontal: dia1.0mm Vertical: dia1.0mm
Power Consumption	max. 1KW	Noise	< 58 dB
Anode Voltage	140 KV	Anode Power	0.4-1.2mA (adjustable)
Generate Angle	80 degree upward	Generate Direct	from top to bottom
Cooling / Duty Cycle	Oil Cooling /100%		



## ➔ ZA150180 X ray Baggage Scanner (With IPC )

### Main features

- ⊗ First full-digital security detector , with clear image and strong anti-interference function.
- ⊗ Embedded Linux operating system, more efficient and stable, with multi-core ARM CPU, low power consumption, energy conservation, and environmental protection function .
- ⊗ Each machine is tested by strict high and low temperature test before leaving the factory, can run for more than 10000 hours without failure
- ⊗ CE/FCC/CCC/ROHS Certificates issued by the Ministry of Public Security.

General Specifications			
Tunnel Size(mm)	1805(L)•1510(W)	Unit Size (mm)	2848.5(L)•1095(W)•1535.5(H)
Unit Weight (kgs)	800	Gross Weight (kgs)	900
Conveyor Speed(m/s)	0.22	Conveyor Height(mm)	338.5
Conveyor Max Load(kgs)	2000	X Ray Dose Per Each Inspection	2.0 μGy
X Ray Leakage	<1.0 μGy / h	Penetration	40mm steel
Wire Resolution	dia0.127mm copper wire (AWG36)	Spatial Resolution	Horizontal:dia1.0mm Vertical: dia1.0mm
Power Consumption	max. 1KW	Noise	< 58 dB
Anode Voltage	140 KV	Anode Power	0.4~1.2mA (adjustable)
Generate Angle	80 degree upward	Generate Direct	from bottom to top
Cooling / Duty Cycle	Oil Cooling /100%		

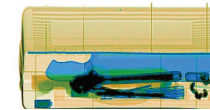


## ➔ ZA6040D X-ray Baggage Scanner

### Main features

- ⊗ First full-digital security detector , with clear image and strong anti-interference function.
- ⊗ Embedded Linux operating system, more efficient and stable, with multi-core ARM CPU, low power consumption, energy conservation, and environmental protection function .
- ⊗ Each machine is tested by strict high and low temperature test before leaving the factory, can run for more than 10000 hours without failure.
- ⊗ CE/FCC/CCC/ROHS Certificates issued by the Ministry of Public Security.

General Specifications			
Tunnel Size(mm)	600(W)×400(L)mm	Conveyor Max Load(kgs)	150kg
Conveyor Speed(m/s)	0.2 ±0.02m/s	Noise	<58dB(A)
X Ray Leakage	<0.1μGy/h	X ray dose per each inspection	≤3.0μGy
Generate Direct	from top to bottom+ side to side	Generate angle	80°
Operation Power	220VAC(±10%) 50±3HZ	Operation temperature /Humidity	0℃~45℃ / 20%~95%
Penetration Resolutio	Top View:φ0.160mm;	Side View:φ0.160mm;	
Penetration	Top View:40mmsteel;	Top View:40mmsteel;	



Side overpass diagram



Front over package diagram

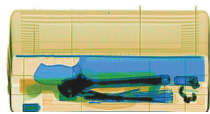


## ➤ ZA10080D X-ray Baggage Scanner

### Main features

- ⊗ It is the first full-digital security detector in China. Clear image and strong anti-interference function
- ⊗ Embedded Linux operating system, more efficient and stable, with multi-core ARM CPU, low power consumption, energy conservation, and environmental protection function.
- ⊗ Each machine is tested by strict high and low temperature test before leaving the factory, can run for more than 10000 hours without failure
- ⊗ CE/FCC/CCC/ROHS Certificates issued by the Ministry of Public Security.

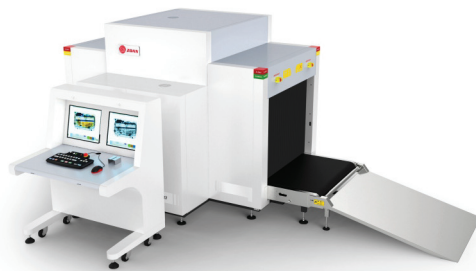
General Specifications			
Tunnel Size(mm)	1000 (W) ×800 (L) mm	Conveyor Max Load(kgs)	200kg
Conveyor Speed(m/s)	0.2 ±0.02m/s	Noise	<62dB(A)
X Ray Leakage	<0.0.45μGy/h	Generate Angle	80°
Generate Direct	from top to bottom+ side to side	X Ray Dose Per Each Inspection	≤4.2μGy
Operation Power	220VAC(±10%) 50±3HZ	Operation Temperature /humidity	0℃ ~ 45℃ / 20% ~ 95%
Penetration Resolution	Top View:φ0.202mm;	Side View:φ0.160mm;	
Penetration	Top View:40mmsteel;	Side View:φ0.160mm;	



Side Overpass Diagram



Front over package diagram



## ➤ ZA4031BX Portable X-ray Optical Machine

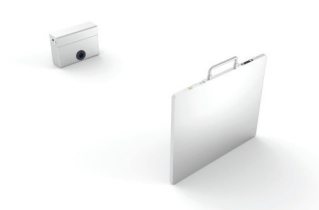
### Main features

- ⊗ The X-ray detector box is super thin and portable with less than 15mm thickness.
- ⊗ The detection efficiency is super, which can greatly reduce the radiation dose.
- ⊗ The imaging area is very large, up to 43 cm \* 35 cm. It can be detected by X-ray fluoroscopy only once.
- ⊗ This equipment can work normally in harsh environments such as strong light.

General Specifications			
Tube Electric Pressure	30 Kv -120kv	Tube Current	0.3mA—1mA(Adjustable)
Size	245mm X 80mm X 184mm	Weight	5.9KG
Pixel Spacing	140 μm	Spatial Resolution	3.6LP/mm
Drawing Time	1s-3s	Imaging Size	430mm×350mm
Work Environment	5-40 ℃,10-75% Rh	Appearance Size	380×460×15 mm
Display Resolution	1920×1080	Cpu	Intri i5
Penetration Force	25mm (steel plate)	60mm (Aluminum plate)	



Test results



Imaging panel



Portable X ray